

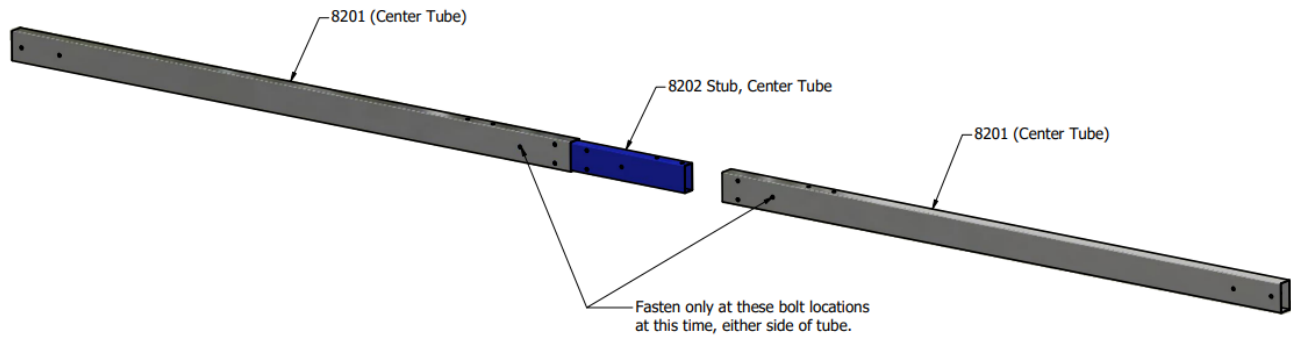
MODEL ST-8200-SA

Stand Alone Storm-Top Cover

Assembly Instructions

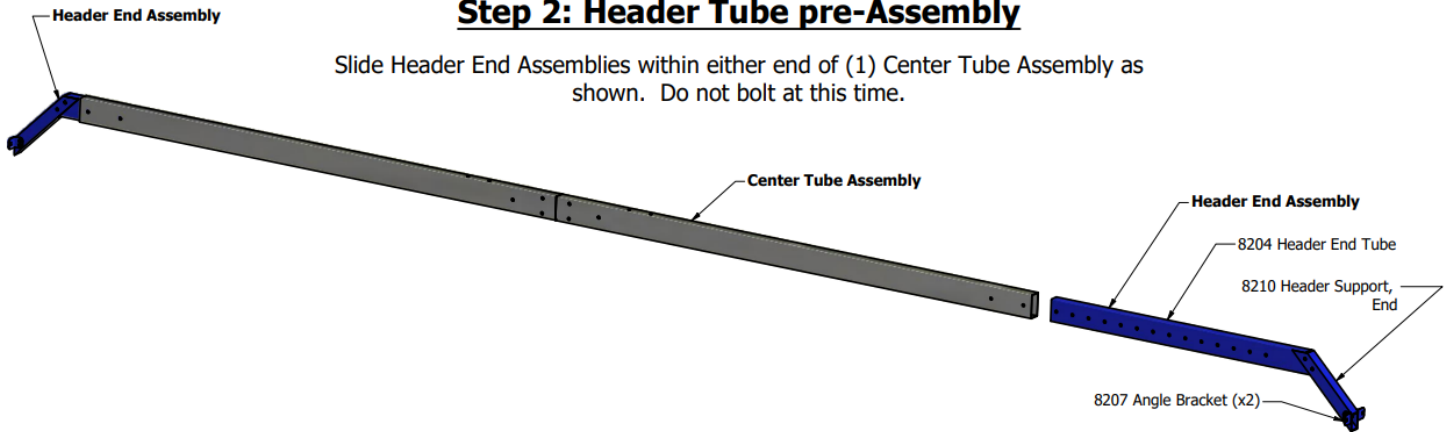
Step 1: Center Tube Assembly (x3)

Lie components on a flat surface. Assemble Center Tubes (8201) to the Stub Connector (8202) using (4) 3/8 x 1" bolts at the locations shown.



Step 2: Header Tube pre-Assembly

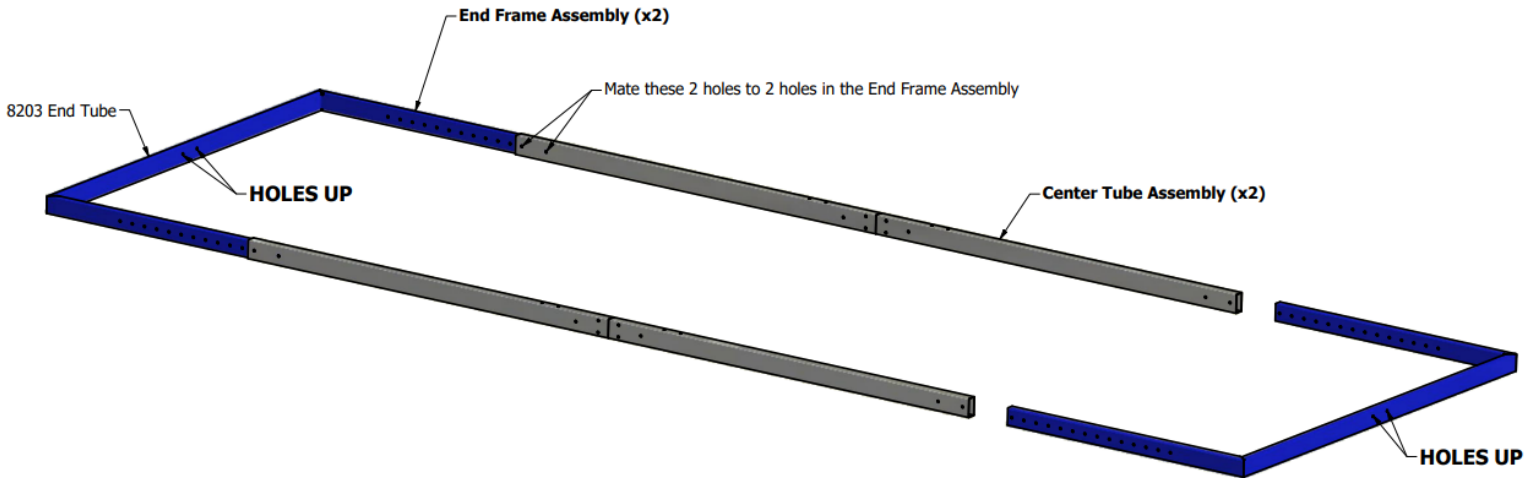
Slide Header End Assemblies within either end of (1) Center Tube Assembly as shown. Do not bolt at this time.



Step 3: Cover Frame Assembly

Measure outside length of the container on which the cover is to be installed. You will want the Cover Frame to be at least this length or longer.

Equally install the End Frame Assemblies into the Center Tube Assemblies as shown. It is acceptable to have one End Frame Assembly extending 3" more than the other in order to reach the length desired. When properly adjusted, the 2 holes at either end of each Center Tube Assembly will closely align with 2 holes of the End Frame Assemblies. Do not bolt at this time.

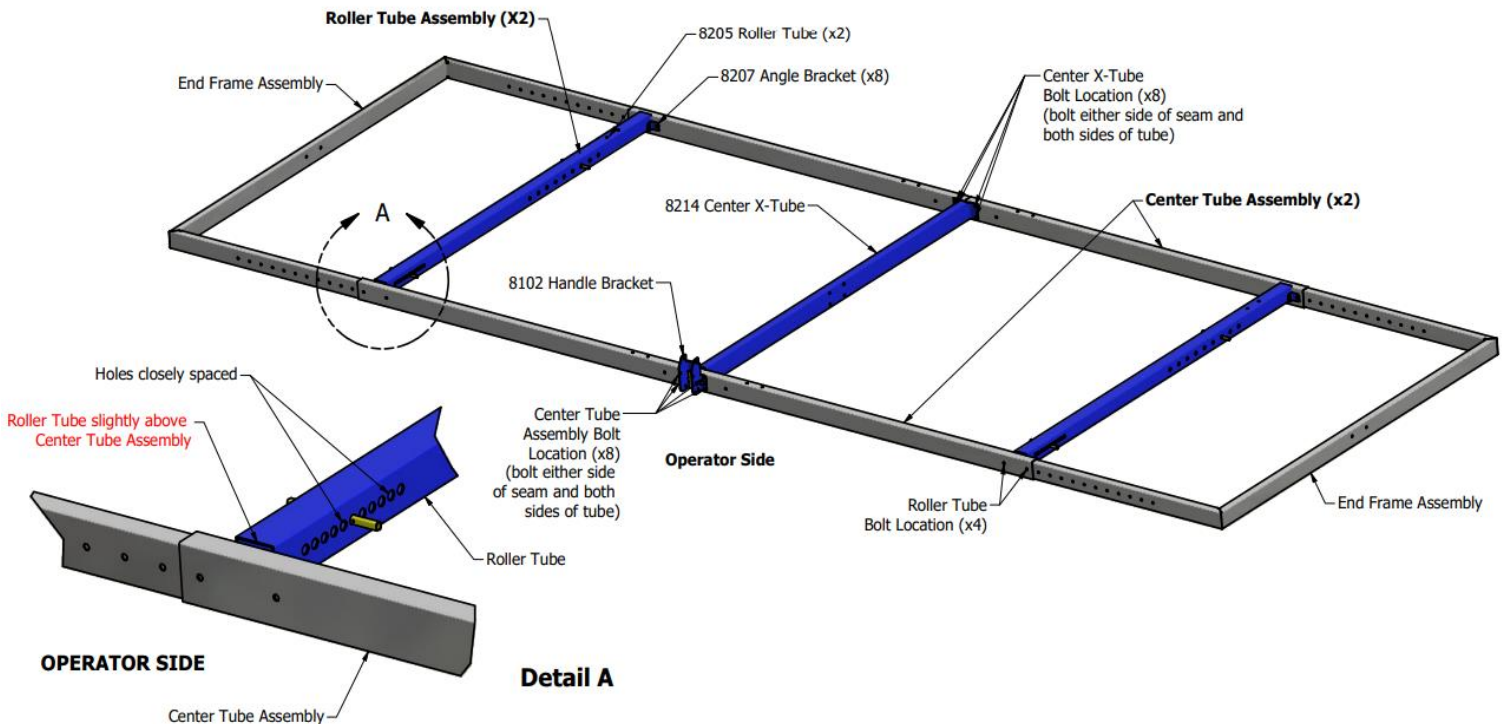


Step 4: Roller and Center Tube Installation

Upon a flat surface with frame adjusted per previous step, bolt the Roller Tubes (8205) with Angle Brackets (8207) to the ends of the Center Tube Assemblies as shown. ***Note orientation (see detail A)*** Use (4) 3/8 x 3" bolts and flange nuts per Roller Tube Assembly, flange nuts to the inside of the frame assembly.

Install Center X-Tube (8214) and Handle Bracket (8102) to the center of the (2) Center Tube Assemblies using (16) 3/8 x 1" bolts. ***Note: Handle Bracket must coincide with Roller Tube Assembly orientation***

See below for bolt locations. Tighten all fasteners. **Center Tube bolts must be completely tightened to prevent sag at seam.**



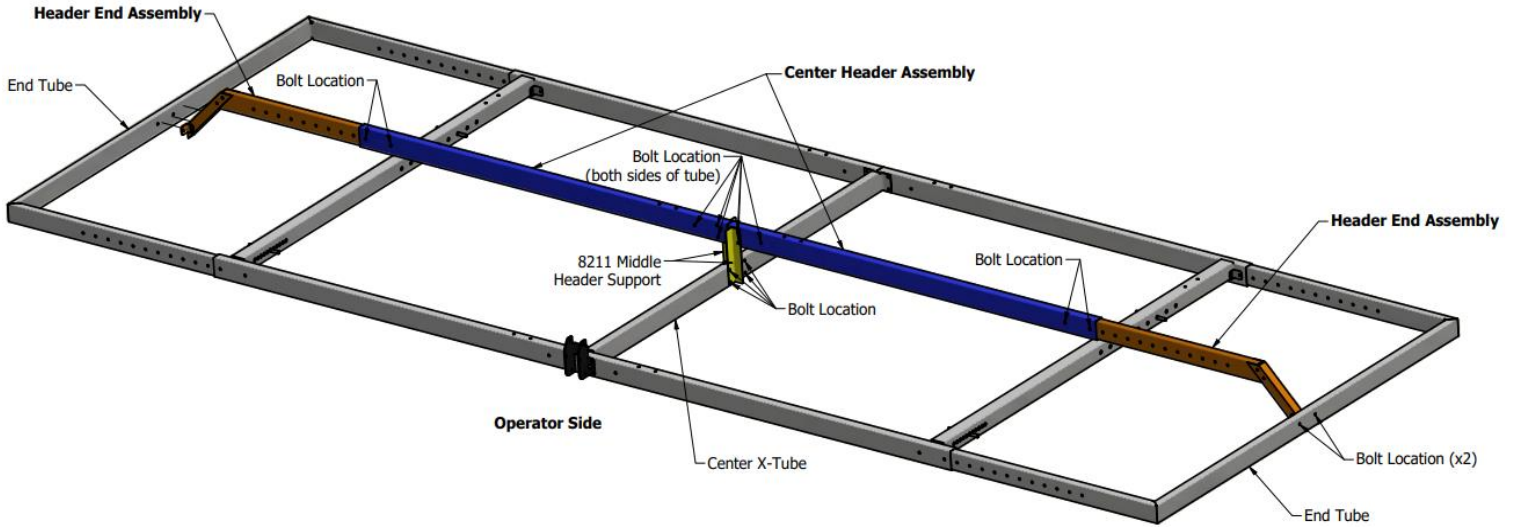
Step 5: Header Assembly Installation

Slide the Header End Assemblies out from the Center Header Assembly until they meet the End Tubes. Bolt Header End Assemblies to End Tubes using (4) 3/8 x 3" bolts and flange nuts, flange nuts to the inside of frame.

Attach one end of the Middle Header Supports (8211) to the Center X-Tube with (4) 3/8 x 3" bolts and flange nuts. Attach upper end of Middle Header Supports to the Header Tube Assembly using (8) 3/8 x 1" bolts.

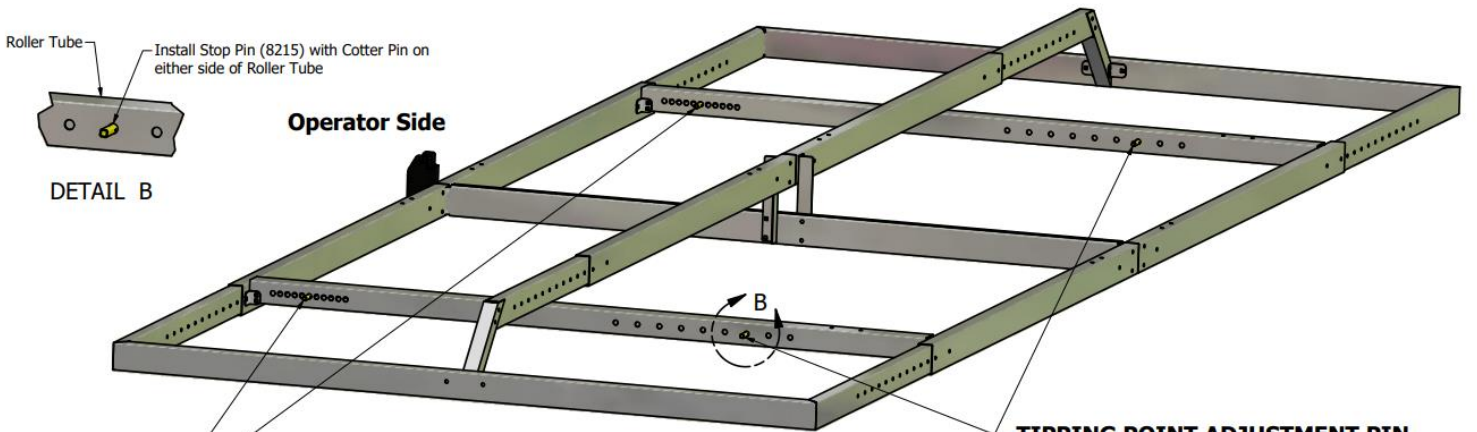
Bolt Header End Assemblies to Center Header Assembly with (4) 3/8 x 3" bolts and flange nuts.

See below for bolt locations. Tighten all fasteners. **Center Header Assembly bolts must be completely tightened to prevent sag at seam.**



Step 6: Stop Pin Placement

WARNING: STOP PINS MUST BE IN PLACE BEFORE ATTEMPTING TO OPERATE COVER. DO NOT PROCEED UNTIL PINS ARE IN PLACE!



COVER CENTERING PIN

Initial Location: 6th Hole from Operator Side

Once cover is on container, this stop pin may need to be relocated to best center cover over the width of the container.

TIPPING POINT ADJUSTMENT PIN

Initial Location: 5th hole from Operator Side

Once cover is assembled to the container, cover tipping force may be altered by relocating this stop pin. Location shown is a starting point and will likely need to be changed in order to suit the particular container the cover is placed upon as well as preference of end user.

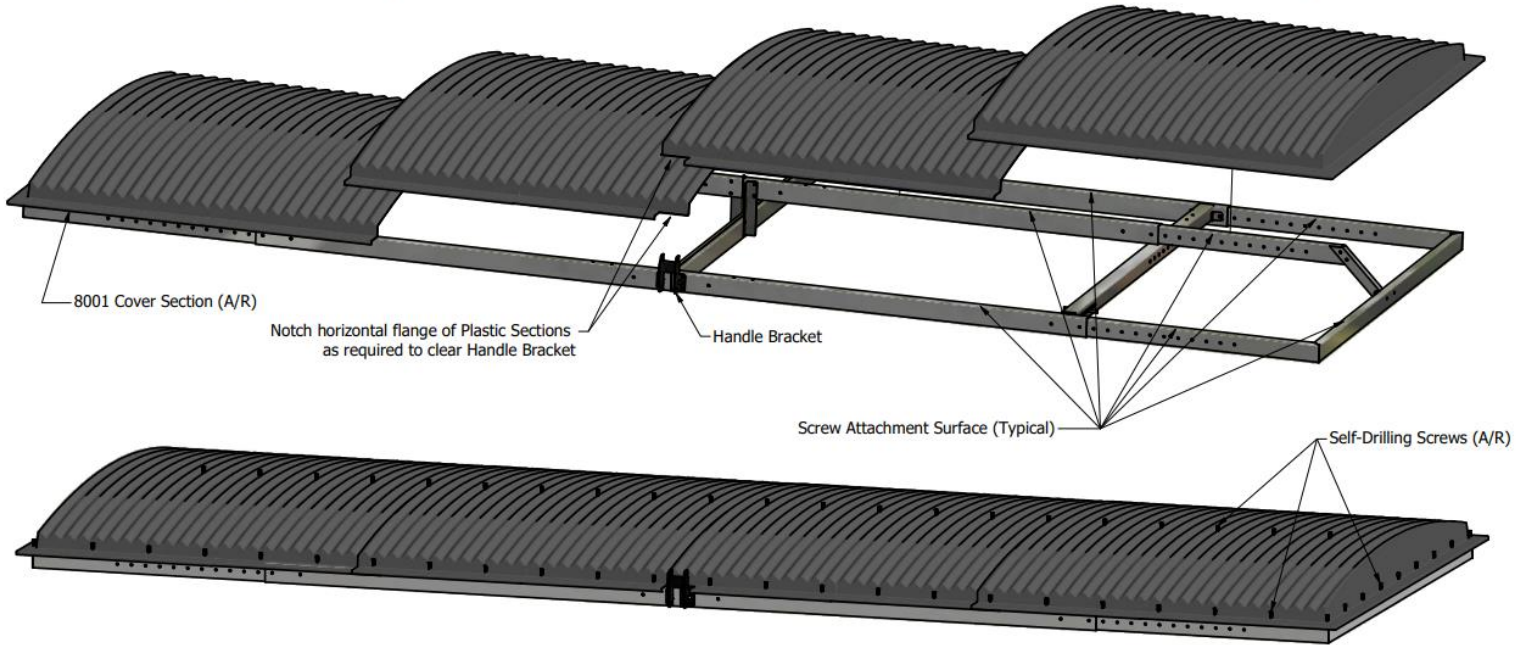
Step 7: Plastic Cover Assembly

Position the Plastic Sections (8001) over the frame (total number of pieces may be less than shown for shorter covers).
***NOTE* THE WIDER END OF EACH SECTION WILL FIT OVER TOP OF THE NARROWER END OF THE NEXT PIECE.**
Due to variations in the plastic molding process, if an interference should occur, place piece to the underside.

Space sections evenly end-to-end and also side-to-side. Notch the plastic to clear the Handle Bracket.

Using the self-drilling screws provided, secure the sections to the top perimeter of the tube frame assembly as required. Space screws approximately 12" apart. Add more where required.

Lastly, secure the plastic sections to the header assembly of the frame (approximately 12" screw spacing).



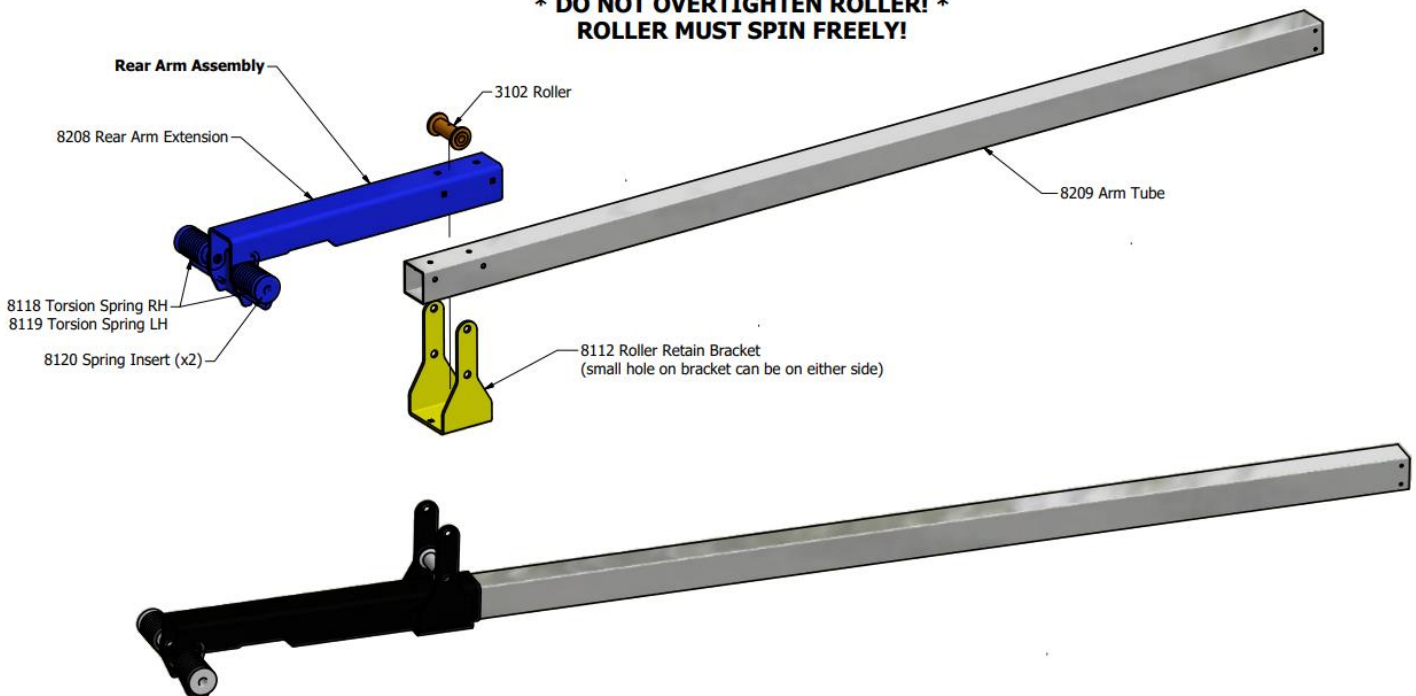
Step 8: Arm Assembly (x2)

Using (2) 3/8 x 4" Carriage Bolts and Flange Nuts, assemble the Rear Arm Assembly to the Arm Tube (8209).

Using (2) 3/8 x 4" Carriage Bolts and Flange Nuts, assemble the Roller Retainer Bracket (8208) to the Arm Tube (8209).

Bolt a Roller (3102) into the lower hole of the Rear Arm Extension (8208) using a 5/8" hex bolt and nyloc nut. Do not install a Roller into the upper hole at this time.

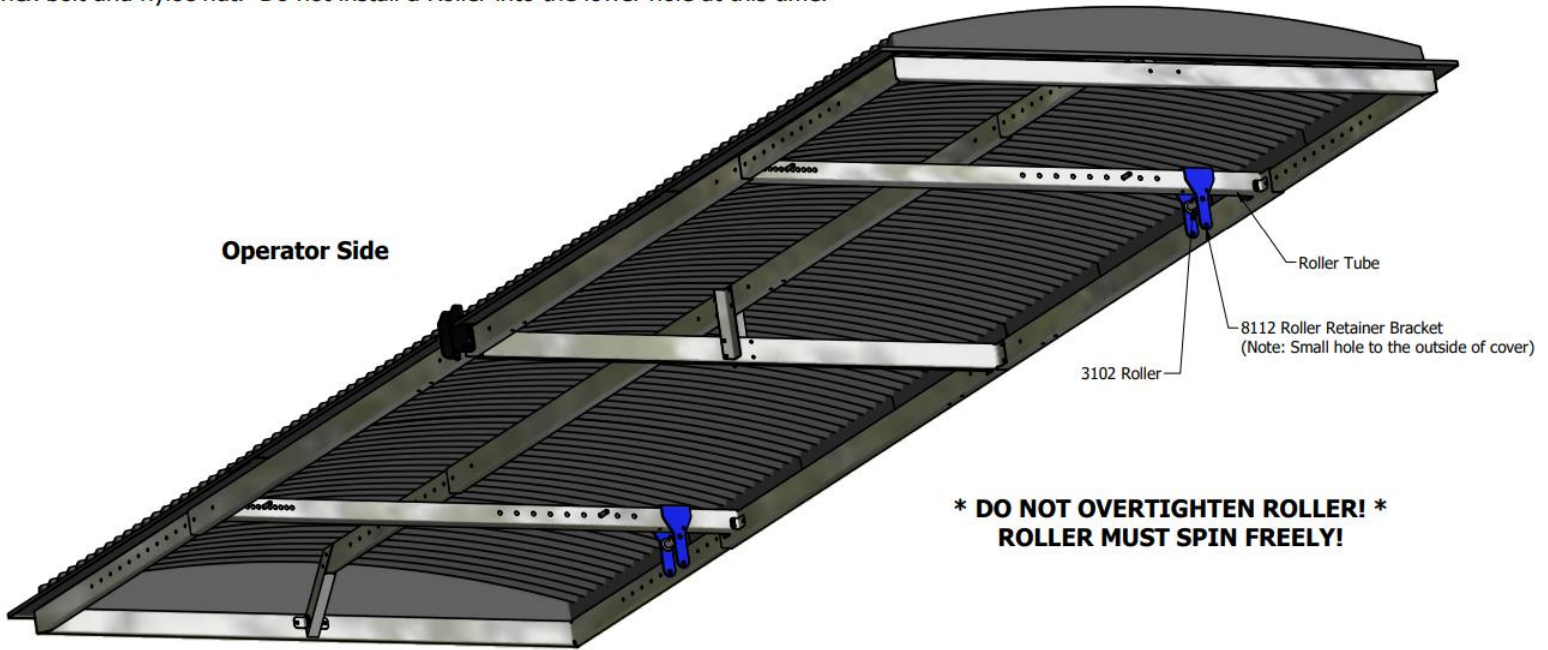
*** DO NOT OVERTIGHTEN ROLLER! ***
ROLLER MUST SPIN FREELY!



Step 9: Roller Retainer Bracket Installation (x2)

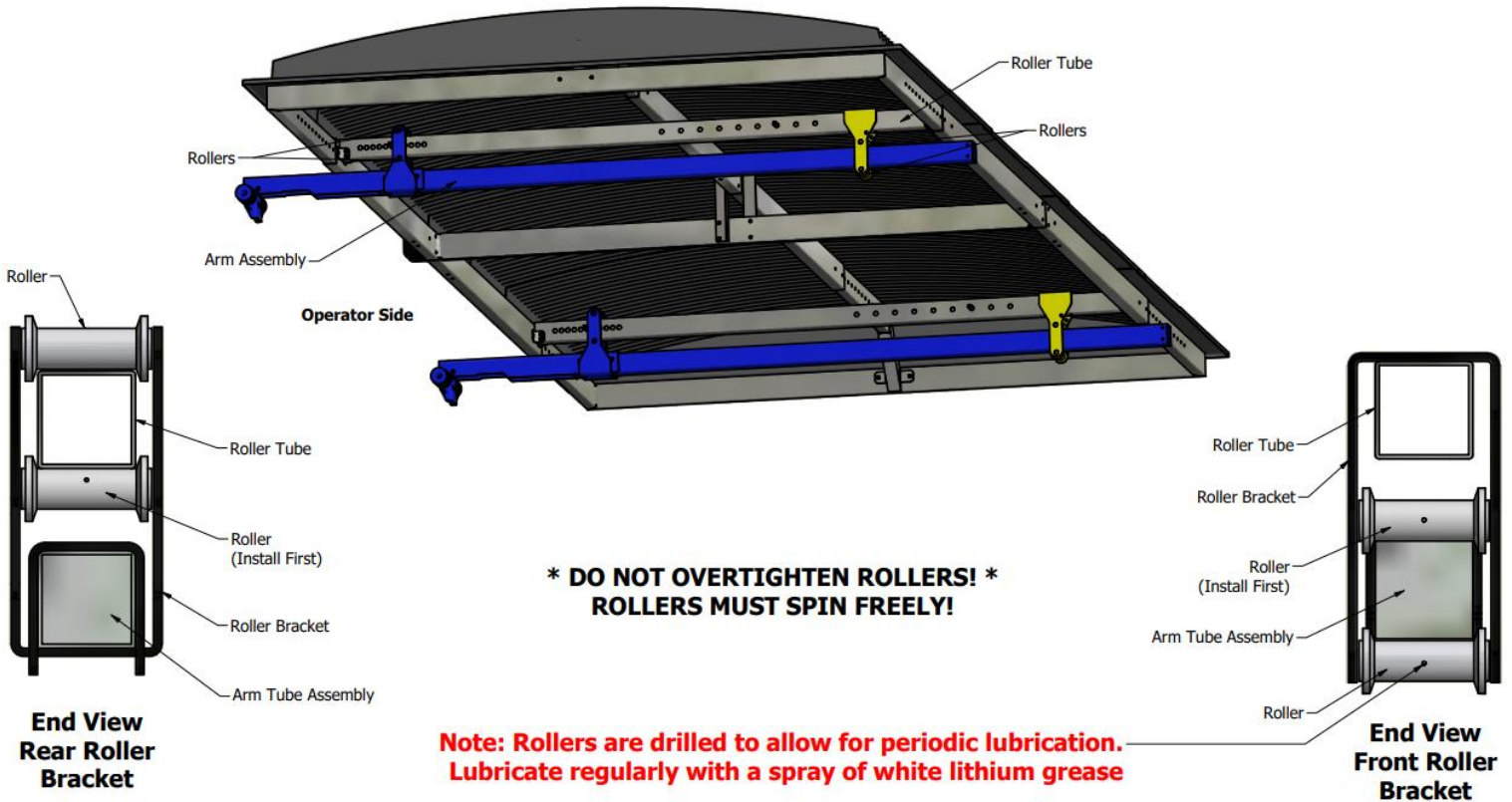
Securely elevate the cover and attach the Roller Retainer Bracket (8112) to the Roller Tube as shown using (2) 3/8 x 4" carriage bolts and flange nuts.

Bolt a Roller (3102) into the upper hole of the Roller Retainer Bracket using a 5/8" hex bolt and nyloc nut. Do not install a Roller into the lower hole at this time.



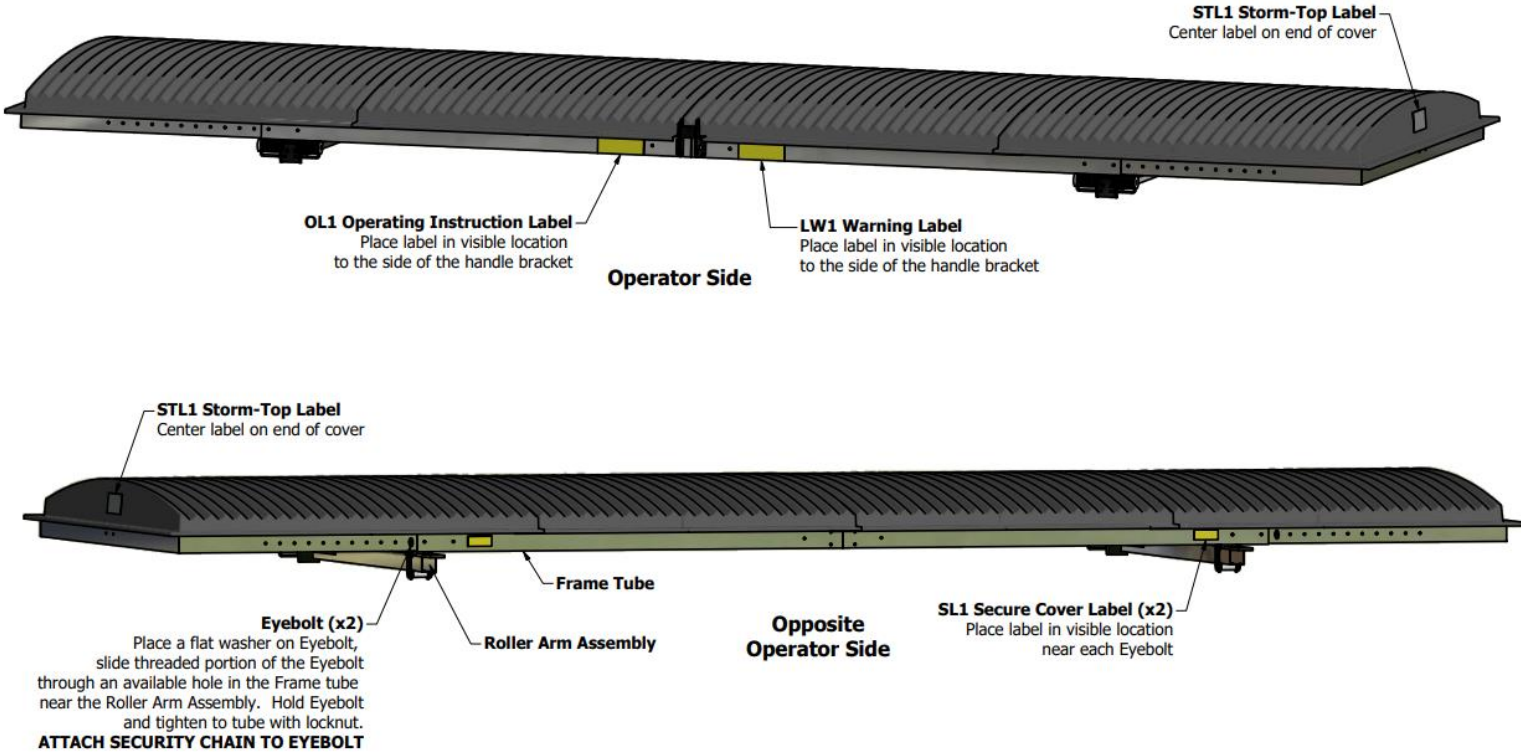
Step 10: Arm Assembly Installation (x2)

Lift the Arm Assembly to the Roller Tube until the Rollers previously installed are in contact with the Tubes. Secure Arm Assembly into place with the remaining (2) Rollers (3102) and 5/8" hardware.



Step 11: Warning Label Installation

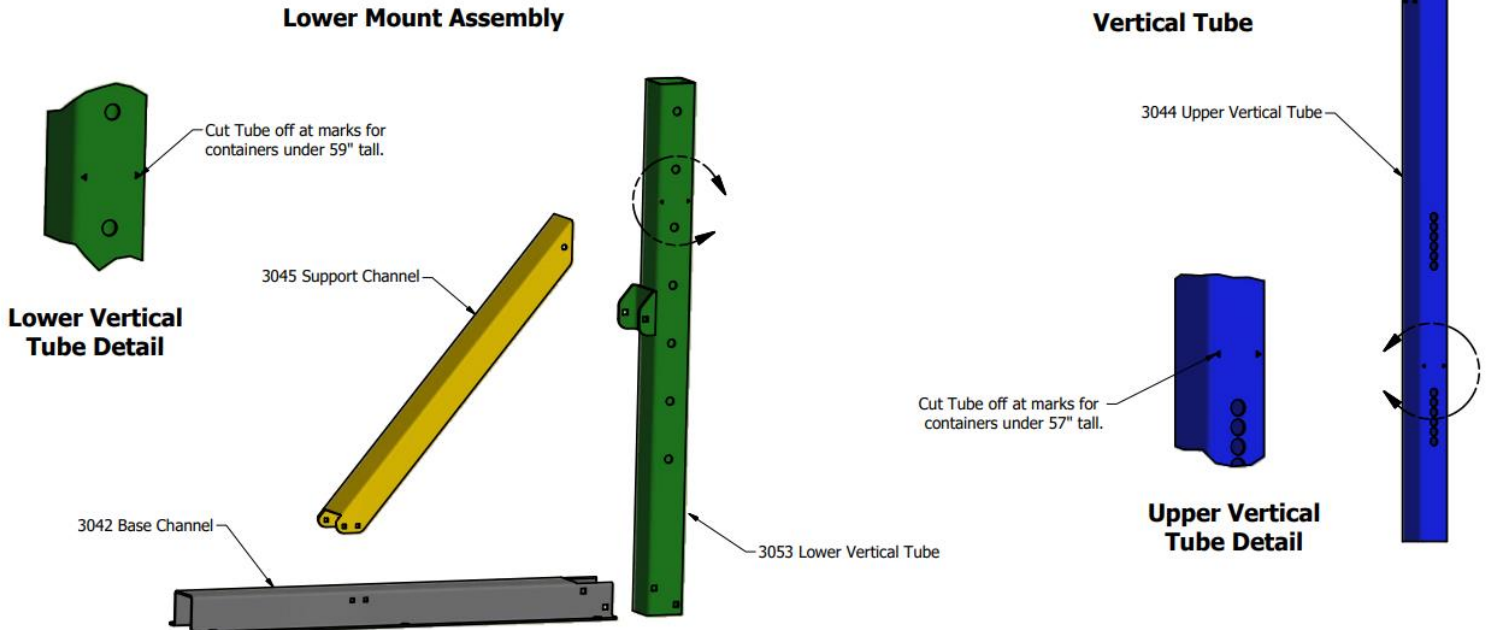
Place labels and eyebolts as shown.



Step 12: Lower Base Assembly (x2)

The frame components, as received, will adjust to fit containers from 99" down to 59" tall. To obtain an adjustment range from 69" down to 47", both the Upper and Lower Vertical Tubes (3044 & 3053) will need to be altered. Cut off at marks and discard the drops. See detail views.

Slide Lower Vertical Tube (3053) within the Base Channel (3042). Loosely fasten with (2) 1/2 x 5 1/2" Carriage Bolts and Flange Nuts. Attach Support Channel (3045) to Base Channel (3042) with (2) 3/8 x 5 1/2" Carriage Bolts and Lower Vertical Tube (3053) with (1) 1/2 x 6 1/2" Carriage Bolt. Square Lower Vertical Tube (3053) to Base Channel (3042) and tighten Flange Nuts to all Bolts.

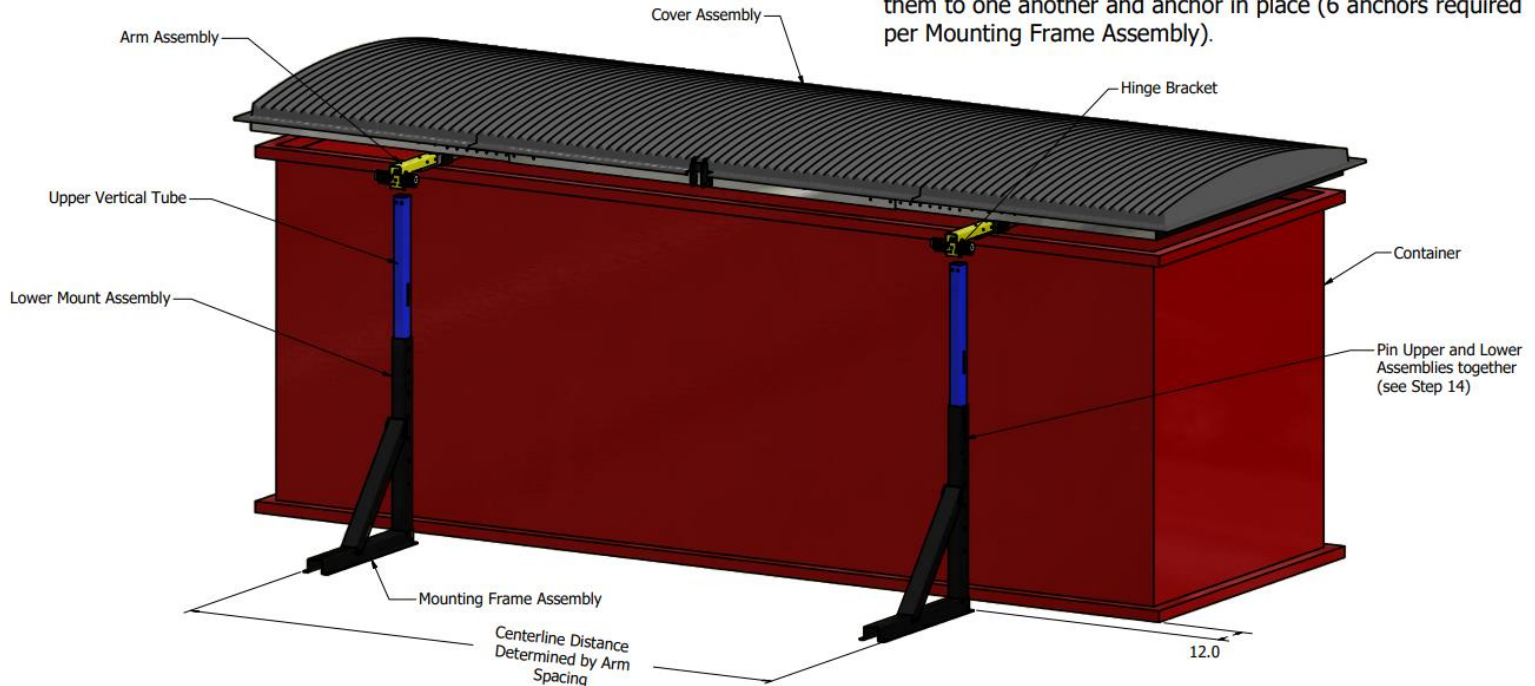


Step 13: Mounting Frame Assembly

Slide the Upper Vertical Tubes within the Lower Mount Assemblies.

Place the container to be covered into location it is to reside. Note: the Mounting Frame Assemblies will end up being approximately 12" from the side of the container.

Center Cover Assembly upon container, hinge side of arms will be overhanging toward the side of the Mounting Frame Assemblies (Mounting Frame consists of the Upper Vertical Tube and Lower Mount Assembly).

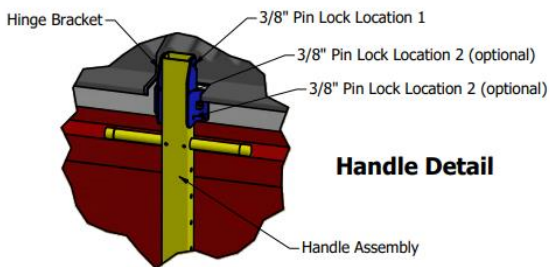


Step 14: Cover/Mount Frame Assembly

Raise the Upper Vertical Tube until the holes line up with those on the Hinge Bracket. Bolt in place with (2) 1/2 x 1 1/2" Carriage Bolts and Flange Nuts .

Place a 3/4" Hex Bolt in first hole that allows it to pass through both the Upper Vertical and Lower Mount Assembly tubes. Snug with Nylock Hex Nut. DO NOT OVERTIGHTEN.

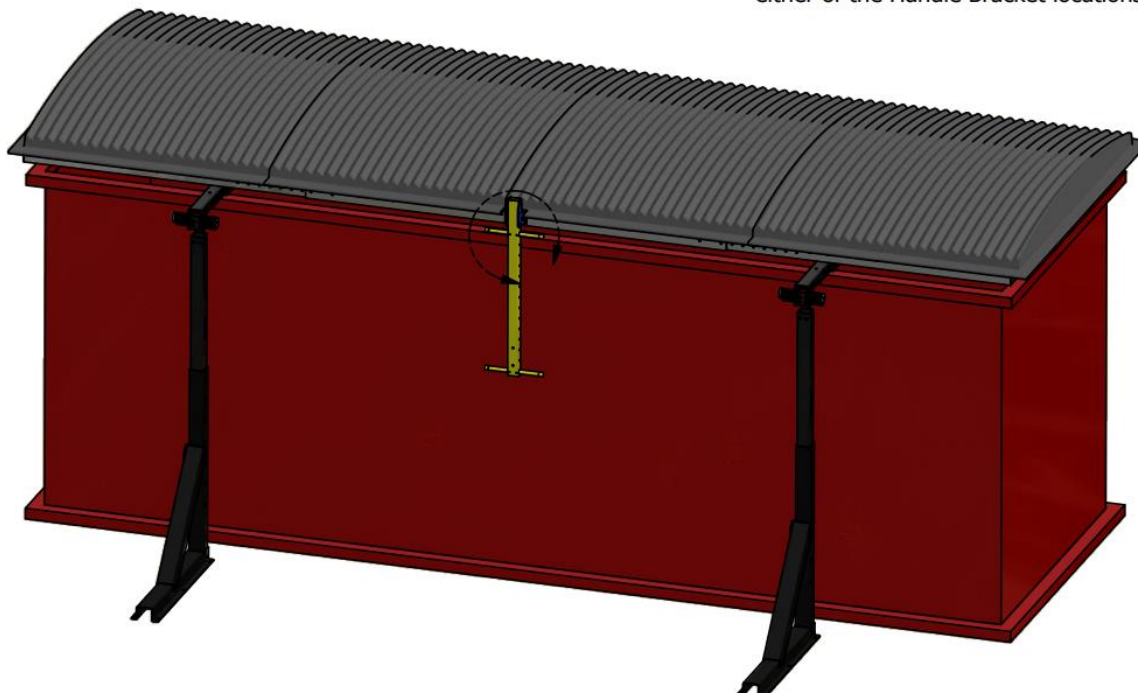
Once Mounting Frame Assembly locations are finalized, square them to one another and anchor in place (6 anchors required per Mounting Frame Assembly).



Step 15: Handle Installation

The Handle Assembly may be attached with a single 3/8" Pin Lock through Location 1 of the Handle Bracket and the first hole location of the Handle Assembly. This will allow the Handle Assembly to pivot as the Cover Assembly is operated.

Alternately, at the preference of the operator, the Handle Assembly may be attached in a fixed position through any of its various holes with one 3/8" Pin Lock in Location 1 of the Handle Bracket and a second 3/8" Pin Lock through either of the Handle Bracket locations marked 2 in the Handle Detail.



Step 16: Adjust Stop Pins

Adjust Stop Pins to set tipping force required to tilt cover.
Adjust Centering Pins to set closed position of the cover over the container. (see Step 6)

Model ST-8200-SA SAFETY CHECKLIST

DO NOT OPERATE STORM-TOP COVER BEFORE REVIEWING

- Make sure all four stop bolts are in place in the roller channels (See Step 6 “WARNING” page)
- Make sure roller bolts are not overtightened. Rollers must spin freely!
- Make sure all warning labels are in place (See step 11)
- Make sure all nuts/bolts are tightened

